

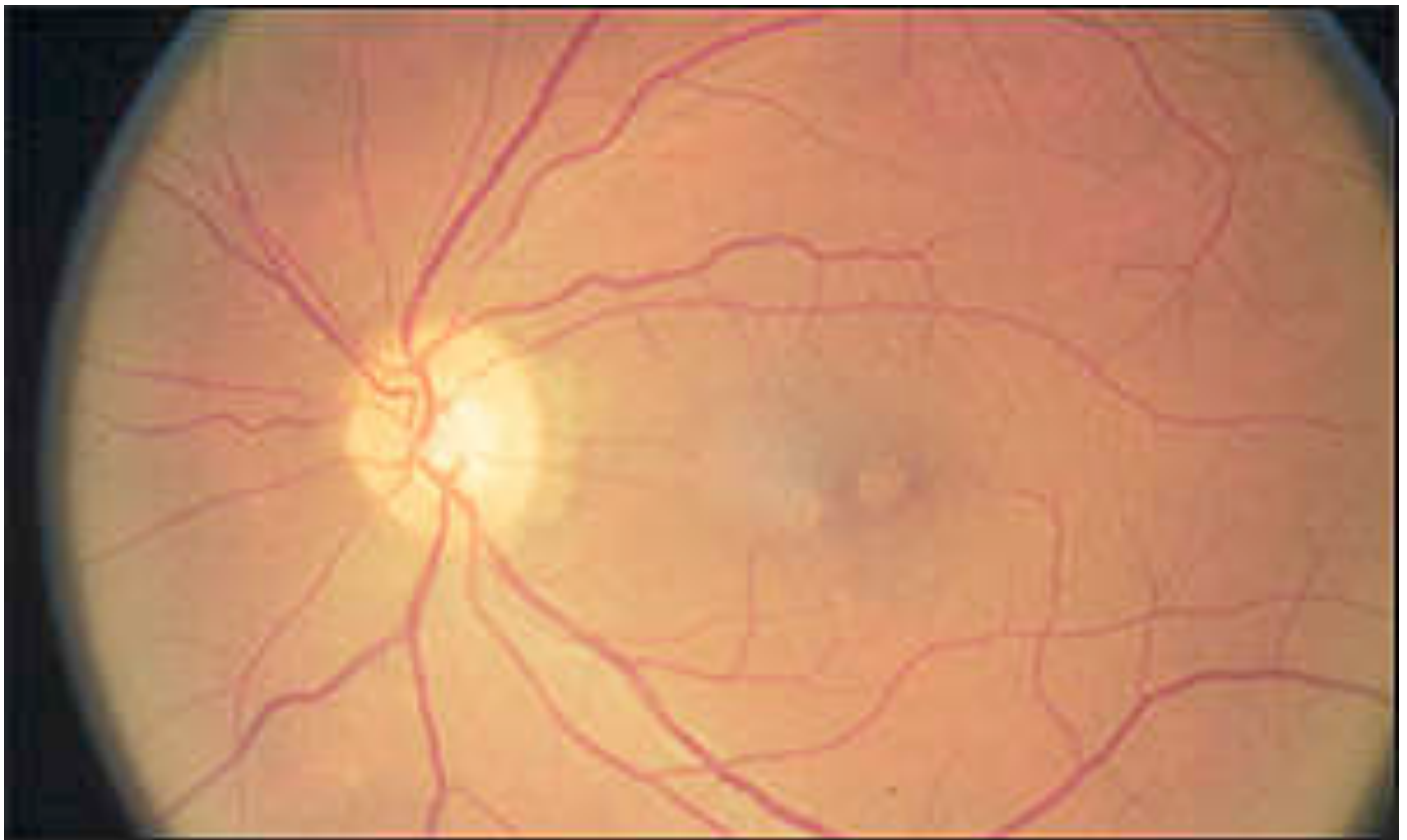
Viewing the partly-eclipsed Sun

without protective filters

will result in a retinal burn.

Depending on how long the retina is exposed to the Sun, this injury may cause permanent damage to vision.

There is no pain when the retina is being burned, and the resulting visual symptoms do not occur until at least several hours after the injury has occurred - by which time it is far too late.



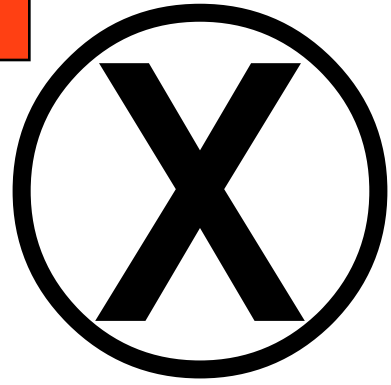
Eclipse-damaged retina

This photograph is the back of the eye of a man who viewed the partial solar eclipse of 1966 without eye protection. The arc-shaped scars are typical of an eclipse burn, and the vision in this eye has been reduced to 20/30 (6/9).

**NEVER LOOK AT THE SUN WITHOUT
PROPER SOLAR FILTERS**

These are NOT SAFE to use:

- ⊗ sunglasses
- ⊗ photographic neutral density filters
- ⊗ smoked glass
- ⊗ polarizing filters
- ⊗ compact discs
- ⊗ floppy disk media
- ⊗ blank colour film
- ⊗ any black and white film negatives bearing images.



These are SAFE TO USE:

- ✓ Eclipse Glasses provided by FotoArt, solar eclipse glasses suppliers or your local astronomy club
- ✓ Arc welders glasses of density 14
- ✓ That's it!



Safe solar filters are available
at FotoArt.

Get yours while supplies last.